

CREDITS

Design and programming by David Crane
 Graphics and animation by Frank Lam
 Music and sound effects by Mark Van Hecke
 Audio engineering and technical support by Alex DeMeo
 Audio drivers by Bitmasters
 Package and manual design by W. R. Wentworth
 Instruction manual by Paula Polley
 Cover Photo Credit: Paul Sutton

Featuring the voice of Frank Hammond



DAVID CRANE is the most successful U.S. game designer of all time. His titles have sold millions of units over the past 15 years.

A true pioneer in the industry, David is one of the founders of Activision. His designs of such early games as *Laser Blast*, *Freeway*, *Dragster*, and *Fishing Derby* helped establish that company's reputation as the best source for Atari 2600 video games. David's innovative and revolutionary title *Pitfall* sold a record 4,000,000+ units and established new horizons for the game-designing craft (and it remained #1 on the video-game charts for 54 consecutive weeks!).

Other David Crane-created titles includes such hits as *Ghostbusters*, *Decathlon*, *Little Computer People*, *Transformers*, *A Boy and His Blob*, and *The Rescue of Princess Blobette*. He has been honoured as "Designer of the Year" by various trade and consumer publications, and his games have been the recipients of numerous awards.

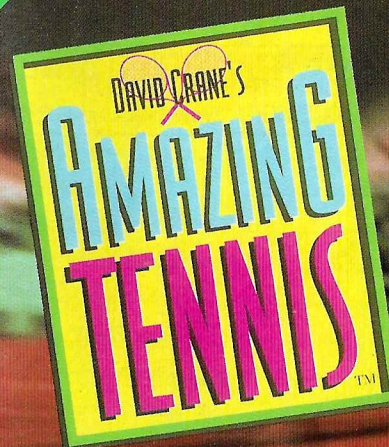
A tournament-calibre tennis player himself, David currently lives in California with his wife and daughter.

ELECTRONIC ARTS
 DISTRIBUTED BY ELECTRONIC ARTS

P.O. BOX 835
 SLOUGH
 BERKSHIRE
 SL3 8XP



PRINTED IN JAPAN



INSTRUCTION BOOKLET



SUPER NINTENDO
 ENTERTAINMENT SYSTEM™

PAL VERSION



WARNING: PLEASE CAREFULLY READ THE CONSUMER INFORMATION AND PRECAUTIONS BOOKLET INCLUDED WITH THIS PRODUCT BEFORE USING YOUR NINTENDO® HARDWARE SYSTEM, GAME PAK OR ACCESSORY.



PROMOTIONAL CONSIDERATION BY



foot Locker
AMERICA'S MOST COMPLETE ATHLETIC FOOTWEAR STORE

LICENSED BY



NINTENDO®, SUPER NINTENDO ENTERTAINMENT SYSTEM™, THE NINTENDO PRODUCT SEALS AND OTHER MARKS DESIGNATED AS "TM" ARE TRADEMARKS OF NINTENDO.



THIS SEAL IS YOUR ASSURANCE THAT NINTENDO HAS APPROVED THE QUALITY OF THIS PRODUCT. ALWAYS LOOK FOR THIS SEAL WHEN BUYING GAMES AND ACCESSORIES TO ENSURE COMPLETE COMPATIBILITY WITH YOUR SUPER NINTENDO ENTERTAINMENT SYSTEM.

Published by Absolute Entertainment, Inc., P.O. Box 116, Glen Rock, NJ 07452. *Amazing Tennis* is a trademark of Absolute Entertainment, Inc. All rights reserved. Absolute Entertainment is a registered trademark of Absolute Entertainment, Inc. All rights reserved. Nintendo, Super Nintendo Entertainment System and the Official Seals are registered trademarks of Nintendo of America Inc. ©1992 Nintendo of America Inc. © 1992, 1993 Absolute Entertainment, Inc. All rights reserved.

Table of Contents

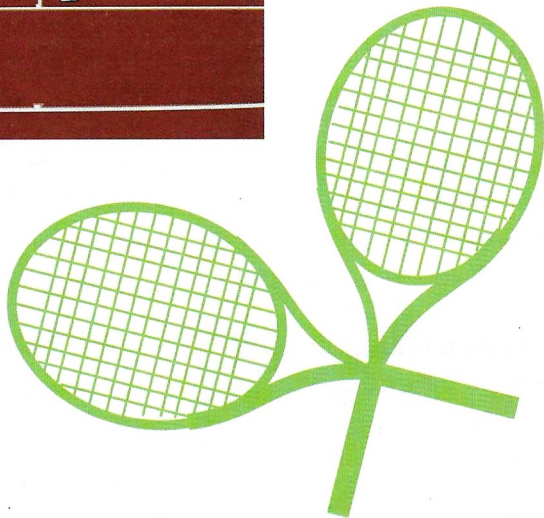
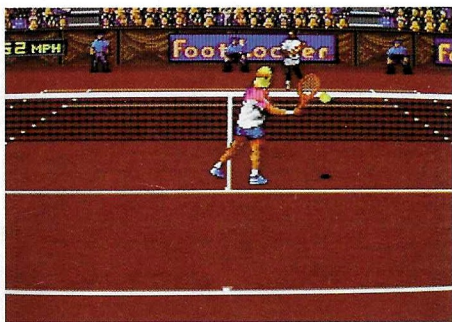
How about a Real Game?.....	4
Tennis Terms	5
The Set-Up	6
Selecting on the Options Screen	6
•Number of Players	6
•Court Surfaces	7
•Right- or Left-handed	7
•Head-to-Head/Opponents	7
Entering your Name	9
Controlling your Game.....	9
On the Court.....	10
Serving.....	12
•Faults.....	12
•Types of Serves	12
Changing Ends.....	13
Rallying	14
•Soft Slice	14
•Hard Topspin	14
•Lob	14
•Drop Shot	14
•Directing your Returns	15
•The Overhead Smash	15
•Serve and Volley.....	15
Game, Set, Match.....	16
Scoring	16
•12-Point Tie-breaker.....	17
Instant Replays.....	18
Tournament.....	19
Top Tennis Tips.....	20

How about a Real Game?

We don't call it *Amazing Tennis*™ for nothing. That's because this is the closest video-game tennis has ever come to the real thing. It has the precision feel and accuracy of real tennis—with a roster of lifelike serves and shots to choose from, not to mention a great lineup of computer opponents.

The rules of *Amazing Tennis* follow real tennis to a "T." You can even choose the types of court surfaces you want to play on. Plus, the superb graphics and animation are exciting to watch—even when you're not holding the controller. The sound is amazing, too—from the *thwack!* of the racquet smacking the ball to the score calls made by the actual voice of world-famous chair umpire Frank Hammond!

So bone up on the rules, grab your controller-racquet, and get ready to hit the court. It's *Amazing Tennis*!



Tennis Terms

LOVE: A score of zero. While no one is quite certain of the origin of this term in tennis, the most common belief is that it comes from the French "l'oeuf" (The Egg), pertaining to the shape of the zero.

POINT: A point is played from the time the ball is put into play by the server until one player fails to return it in-bounds.

DEUCE: A game score of 40 ALL. Once the score of DEUCE is reached in a game, a player must win two points in a row to win the game.

ADVANTAGE: The player who wins the point at DEUCE is said to have an ADVANTAGE. If the player with an ADVANTAGE wins the next point, he will win the game. If his opponent wins the next point, the score returns to DEUCE.

AD IN: ADVANTAGE to the serving player.

AD OUT: ADVANTAGE to the receiving player.

GAME: The GAME is decided in favour of the first player to win at least four points by a margin of two.

SET: A set is awarded to the player who wins at least six games by a margin of two, or to the player who wins a tie-breaker at 6 ALL.

TIE-BREAKER: The 12-point tie-breaker is played when the games are tied at 6 ALL, and determines the winner of the set. It consists of a series of points played until one player wins at least seven points by a margin of two.

MATCH: A match in *Amazing Tennis* is a best two-out-of-three set contest, and determines the overall winner between two players. If the players split the first two sets, the winner of the third and final set will win the match.

SPLIT: Players SPLIT the first two sets if they each win one set.

LOB: A high, defensive shot intended to travel over the head of a player at the net.

DROP SHOT: A softly-hit shot intended to land very short—and hopefully bounce twice—before being reached by one's opponent.

RALLY: The back and forth exchange of the ball.

VOLLEY: A ball hit on the fly, before it has bounced on your side of the court.

CROSSCOURT SHOT: A shot hit from one side of the court to the other, such as left to right or right to left.

DOWN THE LINE: A shot that travels along one sideline or the other.

APPROACH SHOT: The shot used by a player to approach the net. The approaching player runs up to the net behind his APPROACH SHOT to take an aggressive position there.

DRIVE: A hard-hit, low shot.

PASSING SHOT: A shot intended to pass out of reach of an opponent at the net.

ACE: An in-bounds serve that an opponent misses entirely (i.e., does not touch with his racquet), resulting in a point for the server.

FAULT: A serve that fails to travel over the net or lands outside of the service box.

DOUBLE FAULT: Two consecutive faults that result in the loss of a point to an opponent.

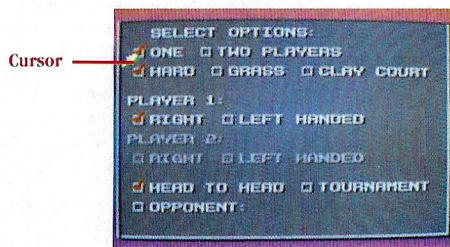
The Set-Up

Loading

1. Make sure the power switch is OFF.
2. Insert the *Amazing Tennis* Game Pak as described in your SUPER NINTENDO™ ENTERTAINMENT SYSTEM™ manual.
3. Turn the power switch ON.

You will now see the title screen. Press **START** to go to the Options Screen and make your selections.

Selecting on the Options Screen



Options Screen

Number of Players

For a smashing good time, you can play against a friend. But if a friend's not available, playing against a computer opponent is lots of fun, too.

To select the number of players, use the **LEFT/RIGHT CONTROL PAD ARROWS** on the Super NES controller to move the cursor arrow to the number you want (see the controller illustration on page 9 if you aren't familiar with the Super NES).

To play against the computer, select **ONE**. To take on a friend, select **TWO PLAYERS**. Press **BUTTON A** to lock in your selection.

NOTE: The checkmarks that are present on the Options Screen when it first appears are in default positions. When a selection is locked in, the checkmarks will appear in the appropriate boxes.



Hard Court



Grass Court



Clay Court

Court Surfaces

Move the cursor to select a **HARD**, **GRASS**, or **CLAY** court. Press **BUTTON A** to confirm your selection.

Here are the differences in the courts:

HARD: Hard courts give the truest bounce of any surface. The ball's bounce and speed—and your timing—will not be affected.

GRASS: Grass gives the ball an erratic low bounce. It tends to stay low and fast when played on grass, so swing early.

CLAY: Because clay is softer, the ball digs into the surface, bouncing higher and slower. So hold your swing a little longer on a clay court.

Right- or Left-handed

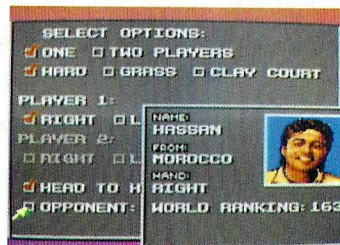
You can choose to play as either a right- or left-handed player. In a two-player game, decide which one of you will be Player 1 (he'll serve first). Then each of you will choose the hand you want to play. Move the cursor to your choice and lock it in with **BUTTON A**.



PRO TIP: You'll probably do best if you pick the hand that matches your real-life preference.

Head-to-Head/Opponents

There are two One-Player modes to choose from in *Amazing Tennis*: **HEAD-TO-HEAD** or **TOURNAMENT**. If you simply want to play a match against a Super NES opponent, use the cursor and **BUTTON A** to select **HEAD-TO-HEAD**. Then move the cursor directly to **OPPONENT** and press **BUTTON A**. (Tournament play is described on page 19.)



There are 15 opponents of varying talents to choose from. To cycle through them, press **BUTTON A**. To go backwards, press **BUTTON B**. To select one, press **START**.

Meet your Match

Here's the roster of computer opponents you can play against, ranging from the most unskilled and easiest to beat, to the most skilled and difficult to beat players. In a tournament, you may encounter any of these players at any time on your way through the Draw (see page 19 for details of tournament play).

Jacques

country: France
Right-handed
world ranking: 502

Bobo

country: Italy
Left-handed
world ranking: 419

John

country: U.S.; Florida
Right-handed
world ranking: 280

Ingmar

country: Monte Carlo
Right-handed
world ranking: 269

Rajid

country: India
Right-handed
world ranking: 241

Toshi

country: Japan
Right-handed
world ranking: 206

Christiaan

country: Holland
Left-handed
world ranking: 180

Hassan

country: Morocco
Right-handed
world ranking: 163

Nick

country: U.S.; California
Left-handed
world ranking: 114

Aaron

country: Philippines
Right-handed
world ranking: 92

Kanyanta

country: Zambia
Right-handed
world ranking: 62

Arthur

country: U.S.; Hawaii
Right-handed
world ranking: 44

Angie

country: Estonia
Right-handed
world ranking: 39

Richard

country: Sweden
Right-handed
world ranking: 37

Sten

country: Estonia
Left-handed
world ranking: 22

Entering your Name

After you've made your selections on the Options Screen, the **Name Entry Screen** will appear.

To enter a letter use the **UP/DOWN, RIGHT/LEFT CONTROL PAD ARROWS** to point the cursor to a letter and press **BUTTON A**. Continue this way until all the letters are entered. Then press **START**.

To add a space, select **SP**.

To backspace, press **←**.

To clear entire name, press **CLR**.

To simply be called **PLAYER 1** or **PLAYER 2**, press **START** before entering any letters.



Controlling your Game

TOP LEFT BUTTON
Shows Instant Replay
Slow Motion Reverse

CONTROL PAD
Moves your player left, right, forward, back
Controls direction of serve
Controls angle of shot
Moves cursor when making selections

BUTTON Y
Hits a Drop Shot (in Rally)

TOP RIGHT BUTTON
Shows Instant Replay
Slow Motion Replay

BUTTON X
Lobs (in Rally)

BUTTON A
Tosses Serve
Hits Toss for a Soft Serve
Hits a Soft Slice
Confirms Selections

BUTTON B
Tosses Serve
Hits Toss for a Hard Serve
Hits a Hard Topspin
Confirms Selections

SELECT BUTTON
Shows Scoreboard
Returns from Scoreboard
Bypasses Instant Replay

START BUTTON
Begins Play
Pauses/Unpauses Game

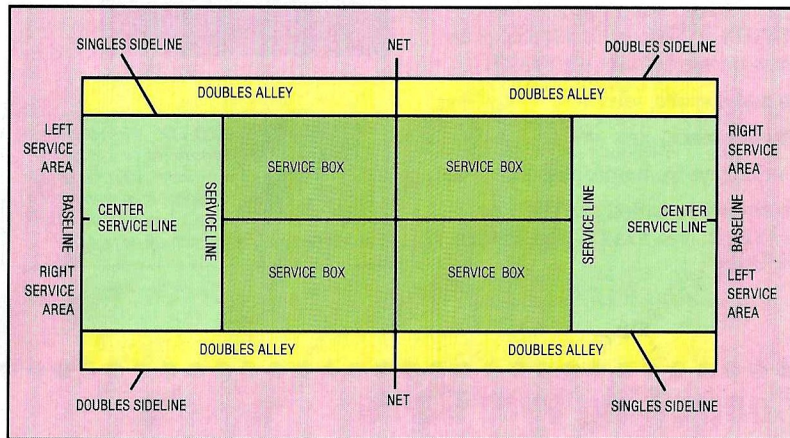
NOTE: For more directions on each of these control points, see the corresponding sections in this manual.

On the Court

The Tennis Court

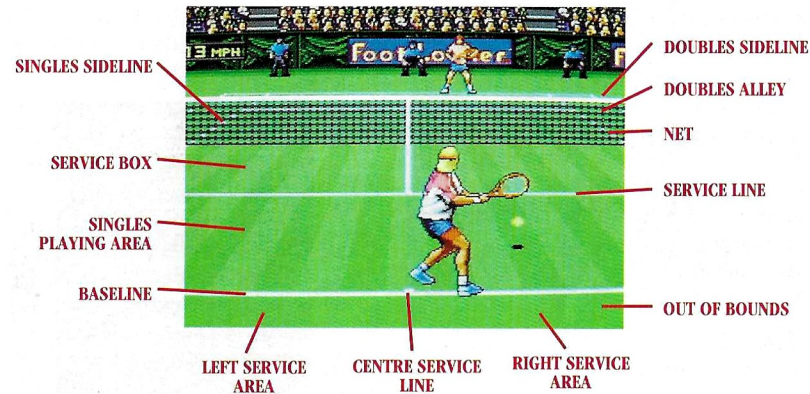
The tennis court is marked off into sections. For singles games—like you'll play in *Amazing Tennis*—you'll need to concentrate on the inside sections.

- Service in-bounds areas
- Singles in-bounds areas
- Doubles in-bounds areas



The regulation tennis court.

Singles games are played inside the SINGLES SIDELINES. Balls that are hit on the inside BASELINE are considered good. Balls hit over it are out. If any part of the ball touches a boundary line, it is good.



The regulation tennis court as seen in *Amazing Tennis*.

Serving

Each server serves for one game, rotating from right to left serving positions. The first point of the game is always from the right court. The second point is served from the left, the third from the right again. At the end of each game, players switch serving and receiving positions (*Amazing Tennis* does this rotation for you automatically).

To serve, the player tosses the ball into the air, then swings to hit it over the net and into the opponent's diagonally opposite service box. For each point served, the player gets two chances to put the ball in play. Most players are more conservative on their second serve in an attempt to avoid losing the point. If the player misses the ball altogether on the serve, he tries again—nothing lost, nothing gained.

Faults

A "fault" is a served ball that:

- Doesn't make it over the net
- Bounces outside of the service box*

* See tennis court diagrams, pages 10–11.

If, on your first serve, you serve a fault, you get another chance. If you serve a fault on your second serve, it's called a **Double Fault** and the point goes to your opponent.

In *Amazing Tennis*, the line judges call the lines and the umpire will call the faults. (They are always extremely accurate.)

Types of Serves

In *Amazing Tennis* you can choose between two types of serves: a hard serve or a soft serve.

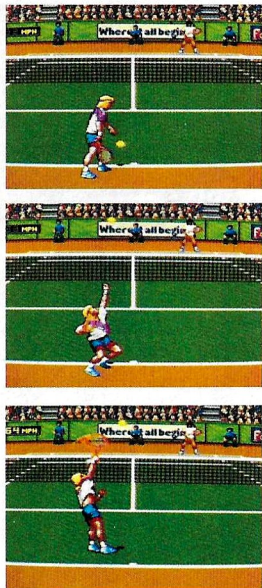
To serve a hard serve, press **BUTTON A** or **B** for the toss. Then press **BUTTON B** again for the swing.

To serve a soft serve, press **BUTTON A** or **B** for the toss. Then press **BUTTON A** again for the swing.

To hit a deep serve, swing early.

To hit a short or low serve, swing later.

To control the direction of your serve, hold the **CONTROL PAD ARROWS RIGHT** or **LEFT** during the wind-up.



Time your serve to swing when the ball has reached the top of its arc and has just begun its descent.



PRO TIP: On your second serve, don't take chances on getting a double fault. Use **BUTTON A** (your soft serve) and swing early to make sure you clear the net.

Changing Ends

After an odd number of games have been played in a set, players change ends of the court. The umpire will prompt you to do so by saying "Change Ends," and the actual change in *Amazing Tennis* will happen automatically. In a tie-breaker, players change ends after every 6 points are played (see page 17 for more on tie-breakers).

The end of the court that is closest to the "camera" is known as the **forecourt**. The end that is farthest from the camera is the **backcourt**.

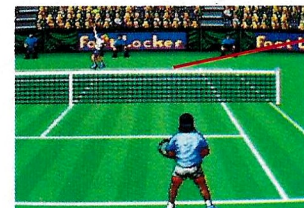


PRO TIP: Strategy and techniques may vary slightly, depending on which end of the court you're playing in.

Carefully read the shot instructions described in this manual, and practice a bit to get the feel of being in both ends.



You will play in the forecourt...



...and the backcourt.

Rallying

Once the ball has been served and it's in play, the back and forth exchange of the ball is called "rallying." Tennis players try to control their shots so that they are difficult to return. For example, if an opponent is still on the left side of the court, the player will try to aim the ball towards the right—in hopes that the opponent will be too far away from the ball to reach it in time to return it.

If an opponent is positioned deep on his side of the court, away from the net and toward the baseline, the player may try for a "drop shot" or "angled volley" that falls close to the net in the opponent's court—again making it harder for him to reach the ball.

Amazing Tennis gives you four basic types of shots—and you can experiment with modifying the directions on each one. The four types are:

Soft Slice

A **soft slice** is your most basic shot. It results in a smooth-sailing ball that clears the net by a few feet.

To execute a soft slice, press **BUTTON A** to meet the ball.

Hard Topspin

A **hard topspin** is a fast-moving ball with a spin on it, making it more difficult for the opponent to aim it.

To execute a hard topspin, press **BUTTON B** to meet the ball.

Lob



A **lob** is a ball that arcs high into the air before beginning its descent. A good strategy is to use a lob when your opponent is close to the net. If your lob is well-placed toward the baseline, it will be difficult for your opponent to run back fast enough to reach the ball in time.

To execute a lob, press **BUTTON X** to meet the ball.

Drop Shot



A **drop shot** is a ball that dies just as it makes it over the net—a very difficult shot for the opponent to return. A drop shot should be made from a position fairly close to the net.

To execute a drop shot, press **BUTTON Y** to meet the ball.



PRO TIP: Don't attempt a drop shot if you're behind the service line.

Directing your Returns

Just like in real tennis, *Amazing Tennis* lets you control the angle or direction in which you return the ball. You can do this in two ways or with a combination of the two ways. The two ways are:

1. Controlling your position in relationship to the ball.
2. Using the **RIGHT/LEFT ARROWS**.

The position in which you place yourself to make a shot affects which way the ball travels. If you stand to the right of the ball, the ball will be directed left. If you stand to the left of the ball, it will be directed right.

To aim a ball to the right, stand to the left of it or press the **RIGHT ARROW** when you swing.

To aim the ball to the left, stand to the right of it or press the **LEFT ARROW** when you swing.

To put a dramatic angle on the ball, position yourself as described above *and* use the corresponding **ARROW** at the same time.

The Overhead Smash



If you have hopes of winning the tournament, here's a shot you should get good at: the **overhead smash**. It can be almost impossible to return.

To hit an overhead smash, back up to the service line to return a *lob* (the smash can only be executed on a lob) and prepare to swing early while the ball is high. Press either **BUTTON A** or **B** to swing. You'll be surprised how effective it can be—especially if you add an angle placement using the **RIGHT** or **LEFT ARROWS**.

Serve and Volley

Here's another strategy you can use against the top seeds. The **serve and volley** is accomplished by taking the net position after serving and hitting your opponent's return before the ball touches the ground.

Executing a successful serve and volley means rushing the net as soon as you serve. You'll use the **UP/DOWN ARROWS** to rush. (If you're positioned in the forecourt, use the **UP ARROW**. If you're in the backcourt, use the **DOWN ARROW**.)

To serve and volley, press the **UP/DOWN ARROW** (see above) during your service motion. You will immediately begin running toward the net where you can prepare to hit a volley, using either **BUTTON A** or **B** to swing.

Game, Set, Match

Tennis matches are actually a series of several games in one. The first group of games is called a “set.” The first player to win at least six games by a margin of two, wins the set.

A tennis “match” is made up of a series of sets. In *Amazing Tennis*, a match consists of three sets, maximum. The first player to win two out of three sets, wins the match. The third set is played only if the players “split” the first two sets.

Scoring

Here are the ways you score points in *Amazing Tennis*:

- Opponent serves two out-of-bounds serves in a row (double fault).
- Opponent fails to return an in-bounds ball.
- Opponent hits a ball out-of-bounds.

Scoring in tennis is quite different from scoring in most other competitive sports because it uses an unusual series of numbers. *Amazing Tennis* will keep score for you automatically. But just so you know what’s going on, here’s how the scoring system works:

SCORE #	POINTS or CALL
0	LOVE
1	15
2	30
3	40
4	WINNING POINT

If the game is tied, 40 to 40, it’s called **DEUCE**.

In a DEUCE game, if the server scores the next point, it’s called **ADVANTAGE SERVER** or **AD IN**. If the receiver scores the DEUCE point, it’s called **ADVANTAGE RECEIVER** or **AD OUT**.

To win a DEUCE game, a player must win two points in a row.

Once a game is finished, players continue on to the next game. The match is over when one player wins two sets.

12 Point Tie-breaker

What happens when there’s a tie at the end of a set and each player has won 6 games? You go into a 12-point-tie-breaker. Here’s how it works:

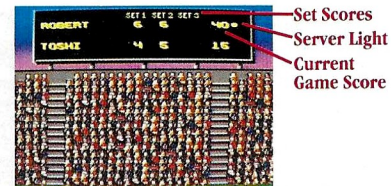
The last player to receive serves the first point starting from the right side. (Let’s call him Player A.)

Then the other player (Player B) serves the following two points starting from the left side.

Now Player A serves again, this time for two points, starting from the left side.

Next, Player B serves from the left. Then players switch ends of the court and Player B serves from the right.

At this point, seven points have been served. The tie-breaker continues until one player wins at least seven points by a margin of two.



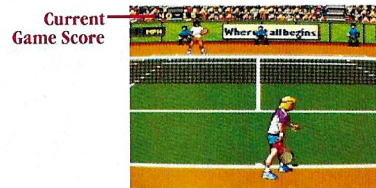
You can view the scoreboard by pressing SELECT before you begin a serve.

Amazing Tennis automatically keeps score for you. The umpire will announce the score after each point. At the end of each set, the screen will tilt up to show the scoreboard, which is above the crowd.

Each player’s score for each set is posted in a row next to his name. The lighted dot indicates which player is serving.

To view the score during the game, press **SELECT** before beginning your serve.

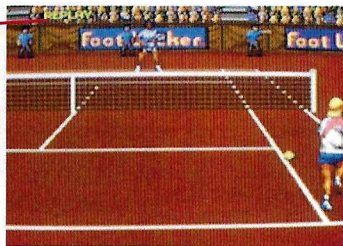
To accelerate through the scoreboard sequence and get back to the court, press **SELECT** as soon as you see the scoreboard or when the umpire finishes calling the score.



The current game’s score will be displayed here after each point.

Instant Replays

This shows you it's an instant replay.



Instant replays let you check the umpire's calls. (Don't be surprised if he's always right.)

At the end of each game you're shown an instant replay of the winning point. When you're first getting the "swing" of *Amazing Tennis*, instant replays are great because they show you what you did wrong—and what you did right.

For example, if you want to know if you're swinging too early—or too late—click in the instant replay. If you're not sure whether your shot was in- or out-of-bounds, click in the instant replay. Or if you made a really terrific save and you just want to extend the high of the moment, play it again.

To see an Instant Replay, press the **TOP LEFT** or **TOP RIGHT BUTTON** before starting a new serve. You'll then get a chance to see the last play over again.

To view a replay in the forward direction, press the **TOP RIGHT BUTTON** during the replay.

To view a replay in reverse, press the **TOP LEFT BUTTON** during the the replay.

To bypass an instant replay, press **SELECT**.

Tournament

In this One-Player mode, you get a chance to play the computer opponents in an elimination format to go for the Tournament Championship.

When you first select **TOURNAMENT** on the Options Screen (see page 6), you'll see the Tournament Draw Sheet with your name on one of the rungs. You must defeat the opponent you're paired with in order to go on to the next match. If you lose the match, you're out of the tournament.

The four top players are "seeded" into the Tournament Draw Sheet. This means that the best players are put into the Draw in such a way that they won't play each other right away. This type of seeding—which is common practice in professional tennis—makes sure the best contenders don't get eliminated in the first round of the match. It keeps the game fair and exciting.

***NOTE:** The best players, even if they win every round, won't play each other until the finals.*

Each tournament consists of four matches. Each match is the best 2 out of 3 sets. Each set is a minimum of six games (see *Game, Set, Match*; page 16). So in tournament play you would play a minimum of 48 games—and that's only if you won every one!

When you win a tournament match you'll go to the Tournament Draw Sheet where you'll see your name on the next rung. You'll also see the scores from the previous games. Take a look at them to see who's hot in this tournament.

***NOTE:** The matches you don't participate in are not played out on-screen. They happen "off-camera," and only their results are displayed on the Draw Sheet.*

If you win all four matches in the tournament, you'll receive the grand trophy and your name will appear along with your score on the final rung of the Tournament Draw Sheet.

***NOTE:** Have your camera ready when you play a tournament. The Trophy Screen will only be displayed for 10 minutes after the end of the final match. *Amazing Tennis* will not save your standing in the tournament if you restart or turn off your Super NES. So if you need to take a break during a tournament, turn off your TV or monitor, but leave your Super NES on.*

Your Name

ROBERT	ROBERT
TOSHI	TOSHI
CHRISTIAN	CHRISTIAN
KANYANTA	KANYANTA
BOBO	BOBO
TOSHOP	TOSHOP

6-4 7-5
6-7 6-2 6-2
4-6 7-5 6-4

To view the Tournament Draw Sheet, move the **UP/DOWN, RIGHT/LEFT ARROWS** to scroll across the sheet.

WARRANTY

Electronic Arts warrants to the original purchaser of this Electronic Arts software product that the medium on which this computer program is recorded is free from defects in materials and workmanship for a period of ninety (90) days from the date of purchase. This Electronic Arts software program is sold "as is," without express or implied warranty of any kind, and Electronic Arts is not liable for any losses or damages of any kind resulting from use of this program. Electronic Arts agrees for a period of ninety (90) days to either repair or replace, at its option, free of charge, any Electronic Arts software product, postage paid, with proof of purchase, at the Electronic Arts Warranty Department. This warranty is not applicable to normal wear and tear. This warranty shall not be applicable and shall be void if the defect in the Electronic Arts software product has arisen through abuse, unreasonable use, mistreatment or neglect.

LIMITATIONS

THIS WARRANTY IS IN LIEU OF ALL OTHER WARRANTIES AND NO OTHER REPRESENTATIONS OR CLAIMS OF ANY NATURE SHALL BE BINDING ON OR OBLIGATE ELECTRONIC ARTS. ANY IMPLIED WARRANTIES APPLICABLE TO THIS SOFTWARE PRODUCT, INCLUDING WARRANTIES OF MERCHANT ABILITY AND FITNESS FOR A PARTICULAR PURPOSE, ARE LIMITED TO THE NINETY (90) DAY PERIOD DESCRIBED ABOVE. IN NO EVENT WILL ELECTRONIC ARTS BE LIABLE FOR ANY SPECIAL, INCIDENTAL, OR CONSEQUENTIAL DAMAGES RESULTING FROM POSSESSION, USE OR MALFUNCTION OF THIS ELECTRONIC ARTS SOFTWARE PRODUCT.

RETURNS AFTER WARRANTY

To replace defective media after the ninety (90) day warranty period has expired, send the original cartridge to Electronic Arts' address below. Enclose a statement of the defect, your name, your return address, and a cheque or money order for £15.00.

Electronic Arts Customer Warranty

P.O. Box 835, SLOUGH,
Berkshire, England.
SL3 8XP

If you have any queries about this product, Electronic Arts' Customer Service Department can help. If your question isn't urgent, please write to us at:

Electronic Arts Customer Service

P.O. Box 835, SLOUGH,
Berkshire, England.
SL3 8XP

Please be sure to include full details with your letter.

If you need to talk to someone immediately, call us on (0753) 546465 Monday to Friday during normal business hours.

Documentation is © 1993 Absolute Entertainment, Inc. All rights reserved.